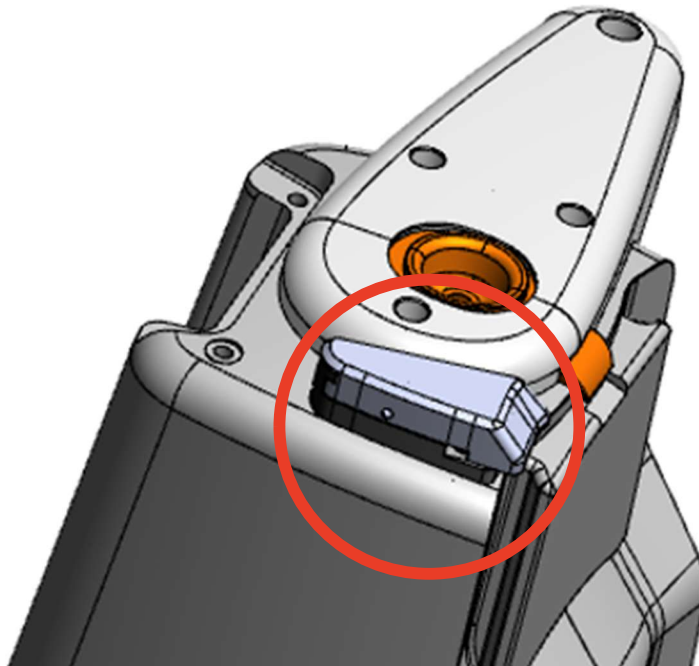


Secondary Lock Installation Guide



BAUG-1060

Title :	Secondary Lock Installation Guide
Last updated :	2025-08-18
Last updated By :	Nairn Young

File name: ACX Secondary Lock Installation Guide 20250818 NAY

File path: <https://skylotecnordic.sharepoint.com/sites/Service/Shared Documents/2.8.1 Utkast service & inspection/ACX Secondary Lock Installation Guide 20250818 NAY.docx>

Template: Work Instructions Template Draft 9

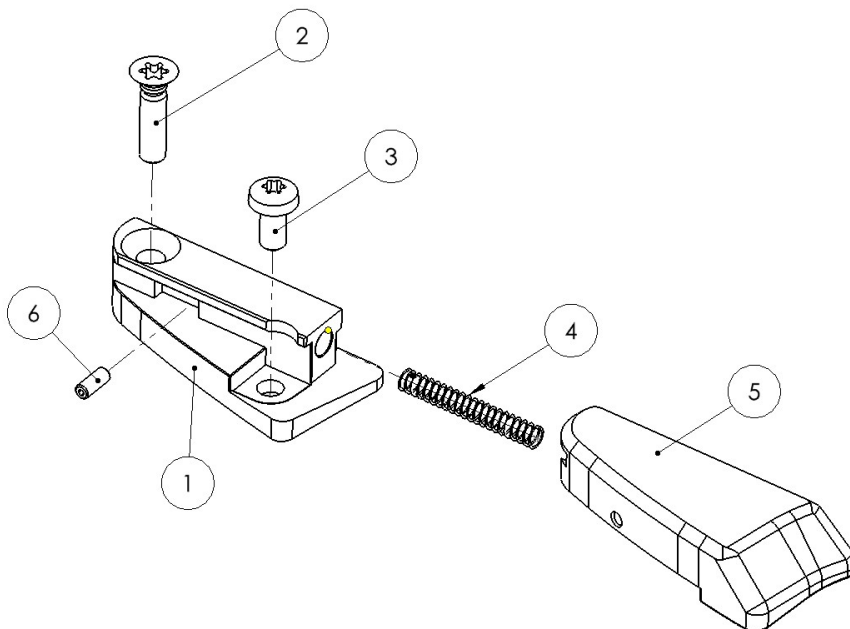
Assembly chapter Ex: “Final Assembly”

Prerequisites

Bill Of Materials – BAUG 1060

Tools & Consumables

#	NO.	DESCRIPTION	QTY	NAME
1	MAT-3754	Secondary lock base	1	Torx T25
2	MAT-3757	Screw MFT A4 M5X25	1	Allen Key 1.5mm (insex)
3	MAT-POA-247	Screw MRT A4 M5x10 Black	1	Loctite 222
4	MAT-3494	Spring cover lock	1	
5	MAT-3755	Secondary lock slider	1	
6	MAT-3756	Set screw MS6SS DIN916 A4 M3x10	1	



Step 1.

- Align the Secondary Lock Base with the lower 2 threaded holes on the rear of the ascender housing
- Mount with screws #2 (MAT-3757) and #3 (MAT-POA-247) with Torx 25 and Loctite 222. Do not overtighten
- Insert spring #4 (MAT-3494) into Base as pictured



Step 2.

- Slide Secondary Lock Slider (MAT-3755) onto the Base
- **Insert set screw** #6 (MAT-3756) Screw in until contact is felt, then back off screw one full turn
- Perform function check. The lock should be spring loaded and reset to the neutral standing position.

Complete!

